

PROGETTAZIONE AUREA PRESENTS:

Greeting the Sun

Toward Symbiosis

Idea and Design:
Cinzia Valente
Gianbattista Pomatto

Presentation by:
Melissa Bado

www.progettazioneaurea.it

We spend our whole lives looking for "home"
without realizing that we have left it outside the door.

Parasites or Symbionts?

Progettazione Aurea aims to recover a healthy and cooperative balance between human beings and the natural environment.

From being parasites of the planet we want to become symbionts again, even in our homes.

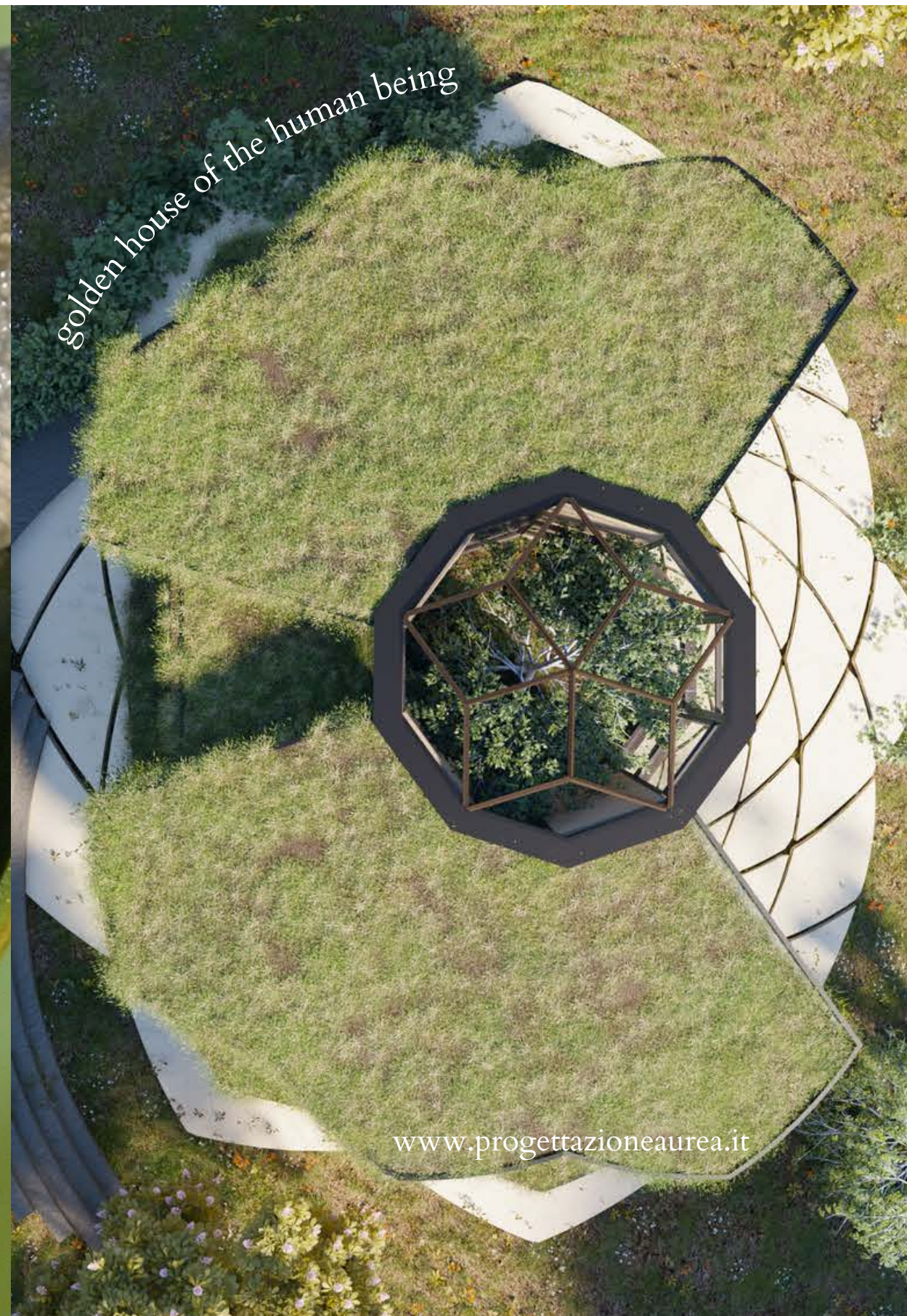
By building places that can dialogue with the environment, human beings can improve their relationship with nature.

Not only a special attention to consumption, materials, and recycling; we re-propose the forms and logic of Nature in order to achieve dwellings capable of respectfully fitting within that pulsating texture that vibrates wherever nature is still free to express itself.

Home is no longer a place in which to cut oneself off from the world, but an intelligent envelope capable of establishing a functional relationship between the life inside and the life outside, like a cellular membrane.



Naturally home



www.progettazioneaurea.it

1. Nature's form:

There is a particular relationship between two lengths, called the golden ratio, that is present and easily identifiable in every natural form—a kind of universal code we find where life expresses itself, uniting every being and every system.

Just compare the shape pattern of a microscopic single-celled organism such as the foraminifera with that of a spiral galaxy, to realize, without the need for calculations and measurements, of the existence of this unique matrix that is expressed through the same constructive design.

We use this special relationship in an articulate and modular way, as shown to us by nature, thanks to a set of geometric rules and harmonic proportions that trace the logic.

2. Plant breath:

Hemp is a biologically pure, durable and unalterable material that, when mixed with lime, creates an ideal biocompound for building use.

Natural, sustainable and energy-efficient, this material, used as an insulator, makes it possible to better control the breathability and, consequently, the temperature of buildings, while greatly reducing the environmental pollution. A material that insulates without dividing, while continuing to allow valuable exchanges between inside and outside.

Wood, which grows by connecting the earth to the sky, is the main material for supporting, building and furnishing the home, bringing its energy and soft authenticity to every room.

3. Warmth of the Sun:

Physiological warm light, an innovative heating system that can transmit heat through far infrared rays, such as sunlight.

When a body, object or the walls of a room, are reached by the rays, they are immediately absorbed, generating a valuable and irreplaceable warming effect.

This results in the creation of an isothermal environment, characterized by pleasant homogeneous heat that does not develop air and dust motions, does not produce moisture, does not result in the formation of mold, and does not release CO2 emissions.

Healthiness, well-being and energy saving for home heating.

.Nature's form .Plant breath .Warmth of the Sun



Greeting the Sun

"Greeting the Sun" embodies the principles of Golden Design, having as its goal the well-being of its inhabitants as much as that to the environment in which it fits.

Every smallest choice is made to create a happy sharing of space for both parties: man and the surrounding nature.

Each element participates in a choral intervention, integrating into a larger overall vision, capable of relating to the existing context as well.

Its sectional shape, like petals of a flower, is designed to welcome the sun from dawn to dusk, using its light all day long and accompanying it into the house intelligently.

www.progettazioneaurea.it

The living structure is built around a bioclimatic greenhouse that actively contributes to improving the building's energy performance and offers the possibility of hosting hydroponic crops.

Wood-framed walls insulated with lime and hemp elements allow the house to "breathe," helping to maintain temperature and regulate humidity.

The roof covered with living greenery, with an extensive system, improves insulation in the summer, energy quality, stormwater management and visual impact, integrating with the surrounding nature.

The skylight above the greenhouse in the center of the house provides sagittal light. Composed of transparent photovoltaic glass, like the glazing, it helps meet the energy needs of the house.



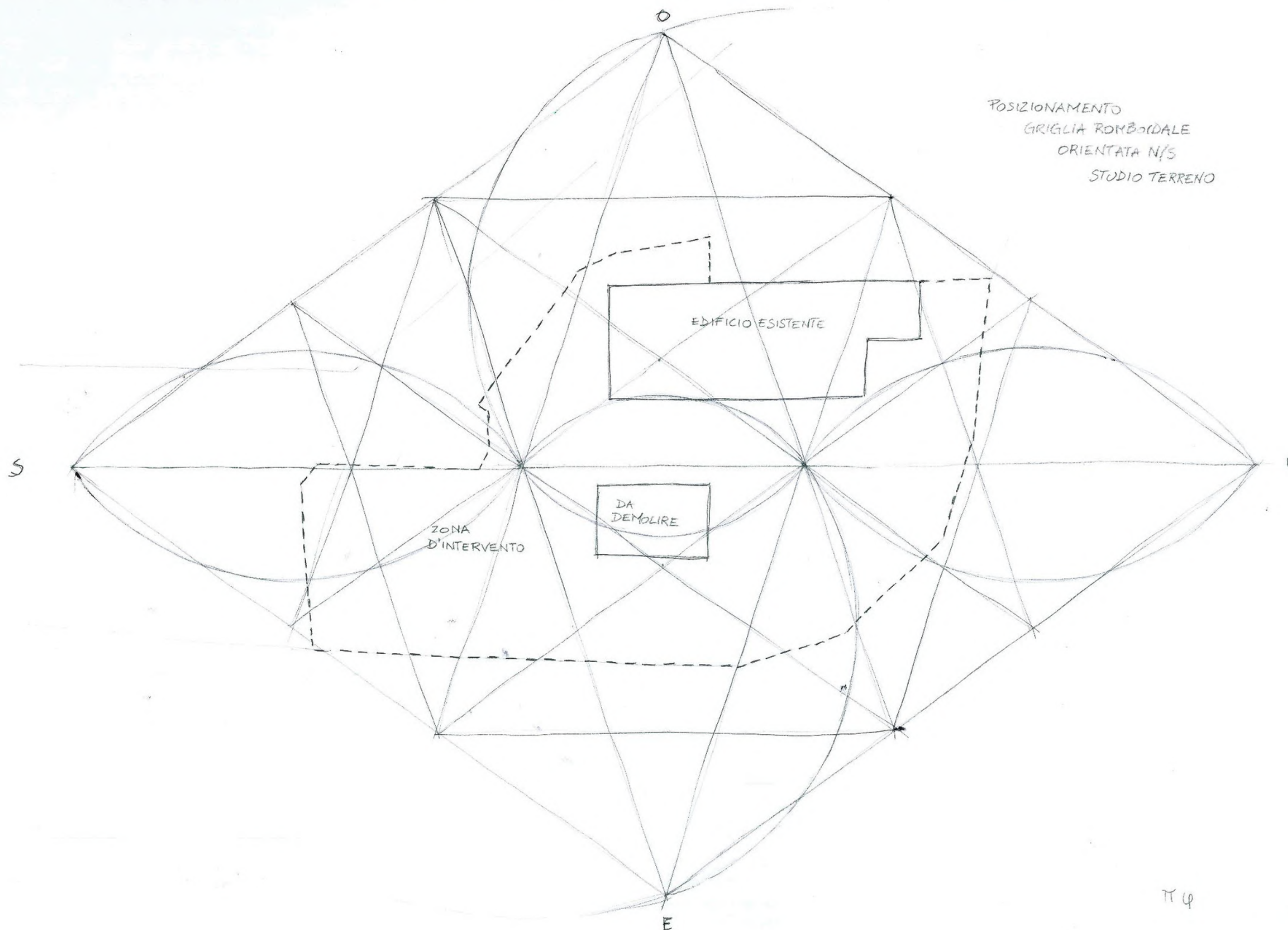


*She wished so much to feel alive
that life surrounded her*

Born to be integrated

Top view

www.progettazioneaurea.it



POSIZIONAMENTO
GRIGLIA ROMBOIDALE
ORIENTATA N/S
STUDIO TERRENO

*I'll tiptoe in, you guide me,
let's be good*

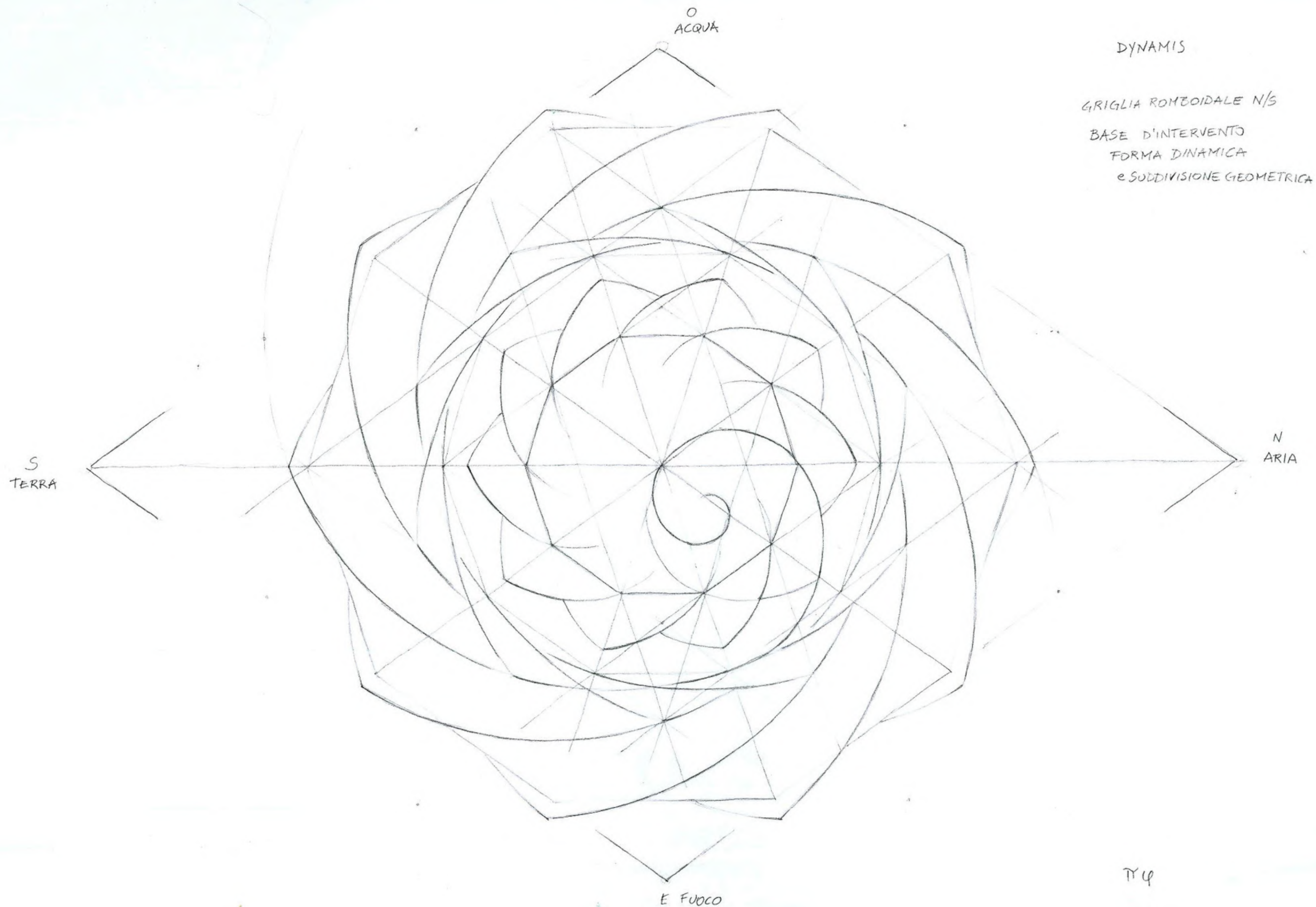
Positioning rhomboidal grid:

Our intervention begins by defining the boundaries of the affected area and placing them in a golden rhomboidal grid, oriented with the major diagonal on the North/South axis.

Respect becomes a mutual and empowering integration, not a measure of forbearance and distance.

www.progettazioneaurea.it

114



*Earth, Water, Air and Fire
in continuous alchemical transmutation*

Identify lines of strength and flow:

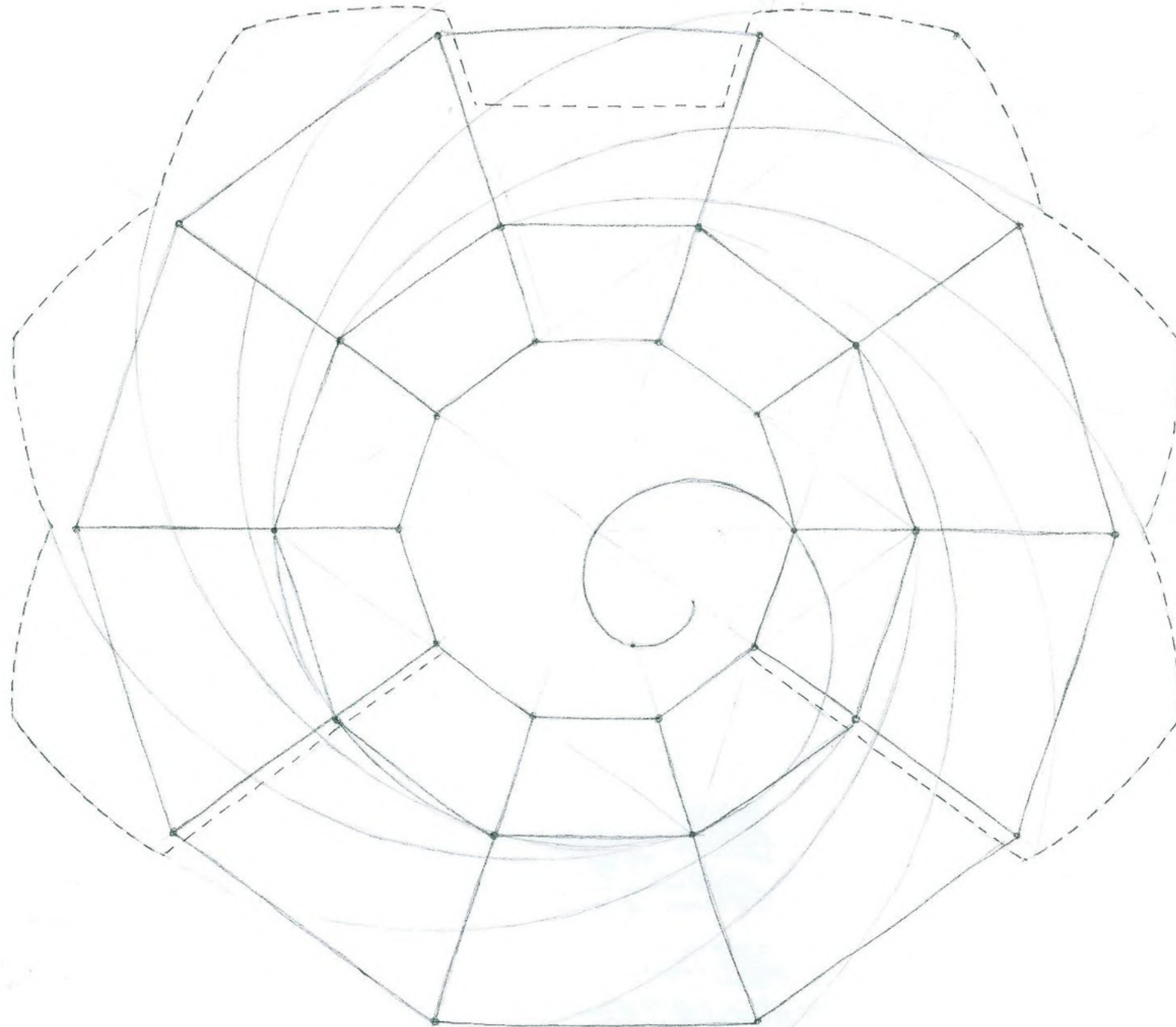
Once we have established the zone of intervention, we infiltrate the grid with greater golden subdivisions so that we understand what the terrain of that particular point suggests.

On this we begin to draw out the major lines of force and flow.

Based on what stands out we shape the clients' request. In this case, a dwelling developed on two above-ground floors of about 130 square meters, on a plot with panoramic views to the east, located in Pianoro (BO).

0

SCHEMA LINEE FORZA
FONDAZIONI
& PILASTRI



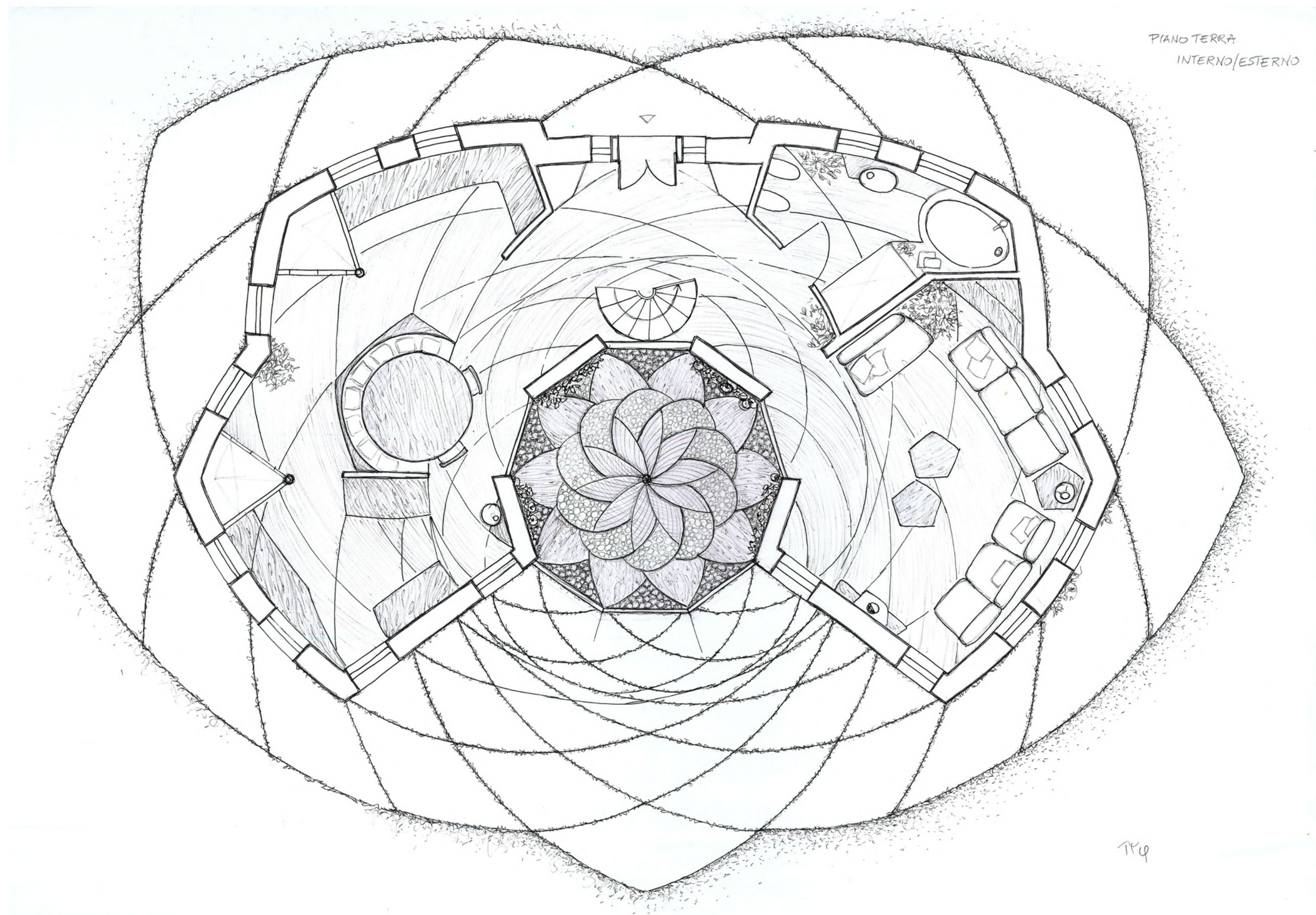
Beauty is contagious

Above as below:

We identify on the same grid, the pattern of force lines for the foundation pillars, for the support of the house and the roof. Consistency and harmony on all levels, even the invisible ones.

www.progettazioneaurea.it

$\pi\varphi$



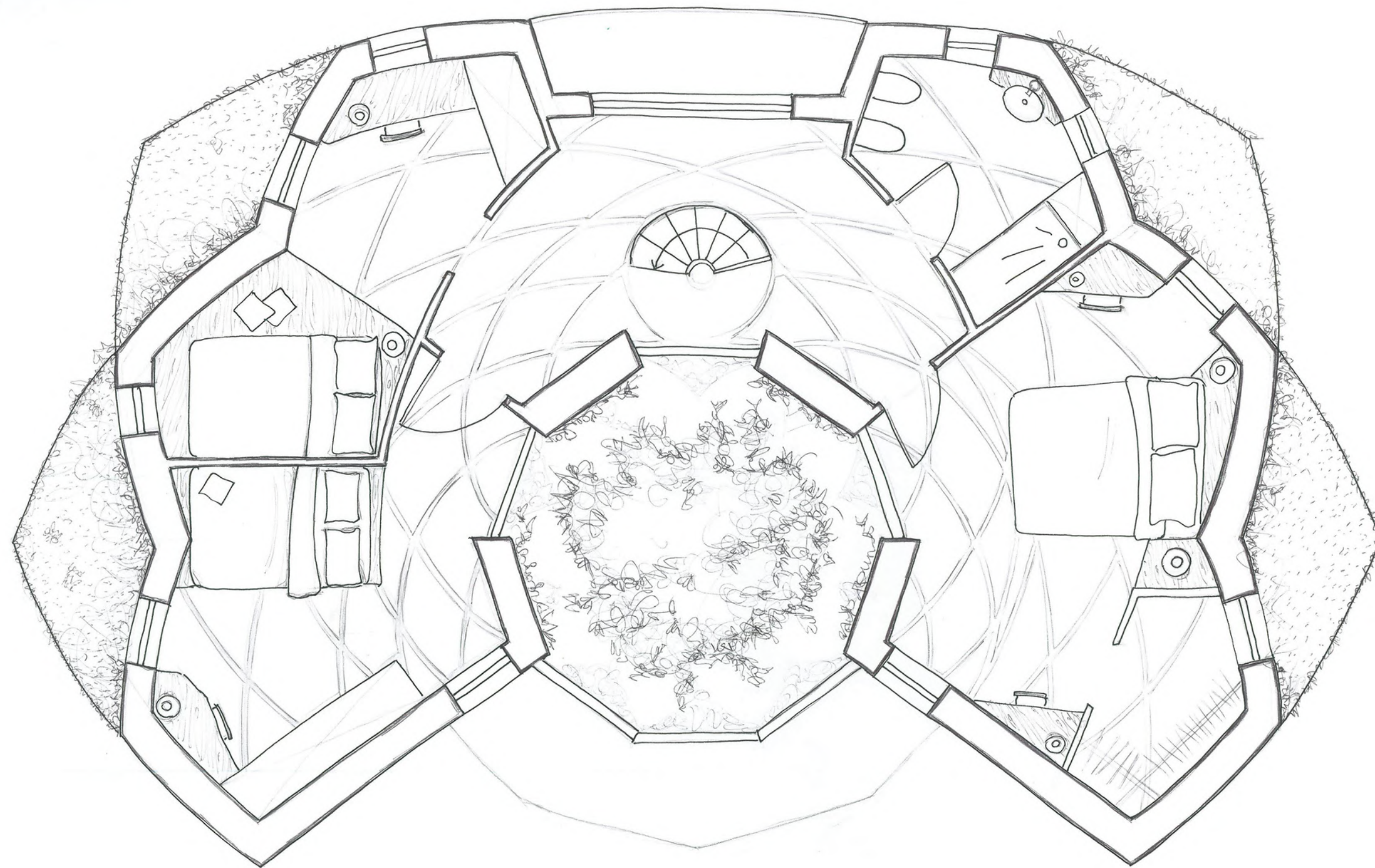
PIANO TERRA
INTERNO/ESTERNO

*Boundaries are made to be crossed,
dancing*

Inside as well as outside:

We use the same golden lines for both inside and outside, so as to create visual and energetic continuity between outside and inside. The purpose is to recreate a connection between the inhabitant and the environment through habitation. With the form we wish to trigger this dynamic, bringing the inside to the outside and vice versa, in a continuous positive exchange.

PIANO PRIMO



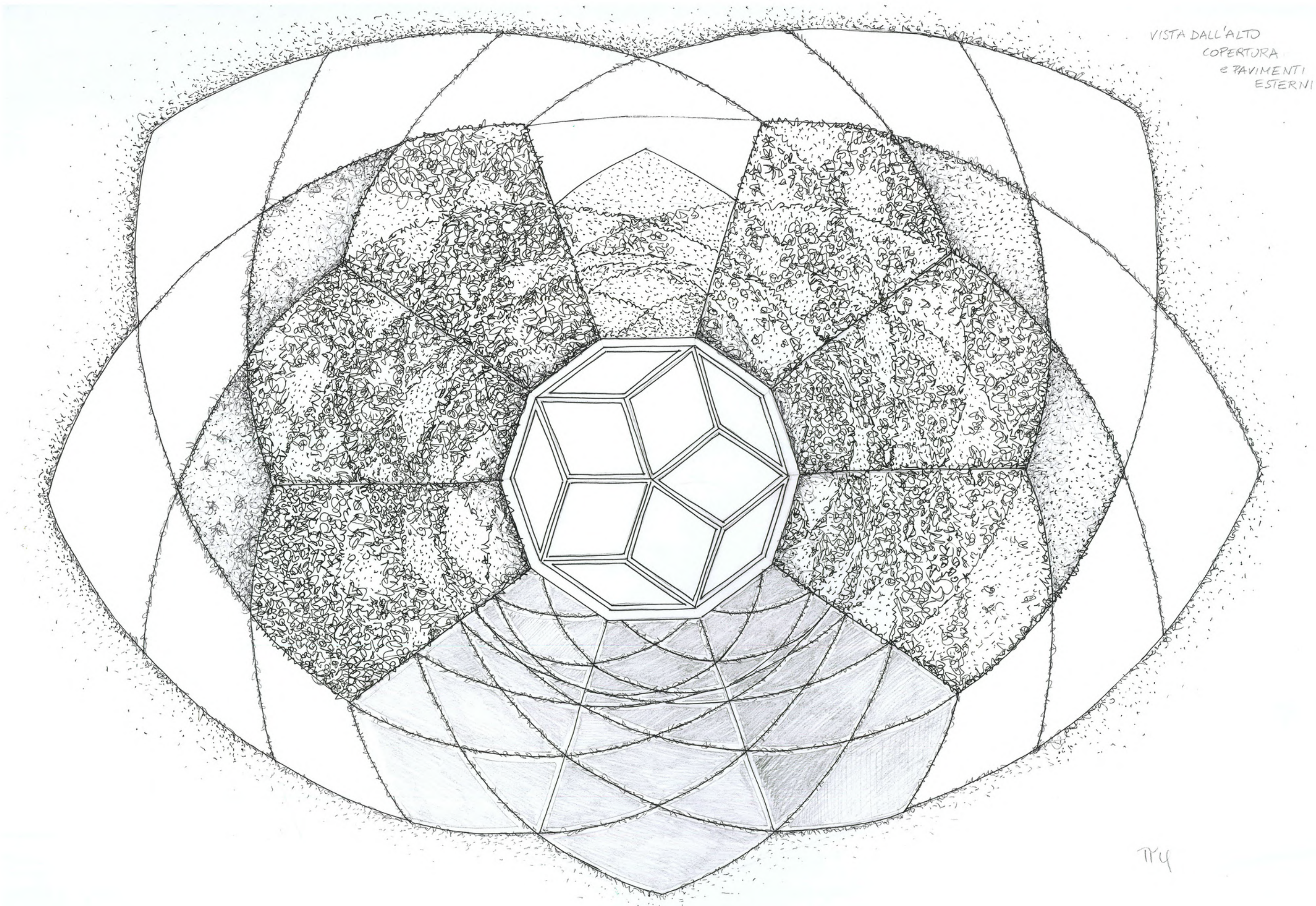
An orchestra called life

Life everywhere:

Even on the second floor, we have brought living greenery both inside, thanks to the bioclimatic greenhouse that connects all rooms, and outside, through terraces covered with extensive greenery and climbing.

We entrust nature with our sensory and energetic well-being.

www.progettazioneaurea.it



VISTA DALL'ALTO
COPERTURA
E PAVIMENTI
ESTERNI

Even for the dark, light is irresistible

Light it is:

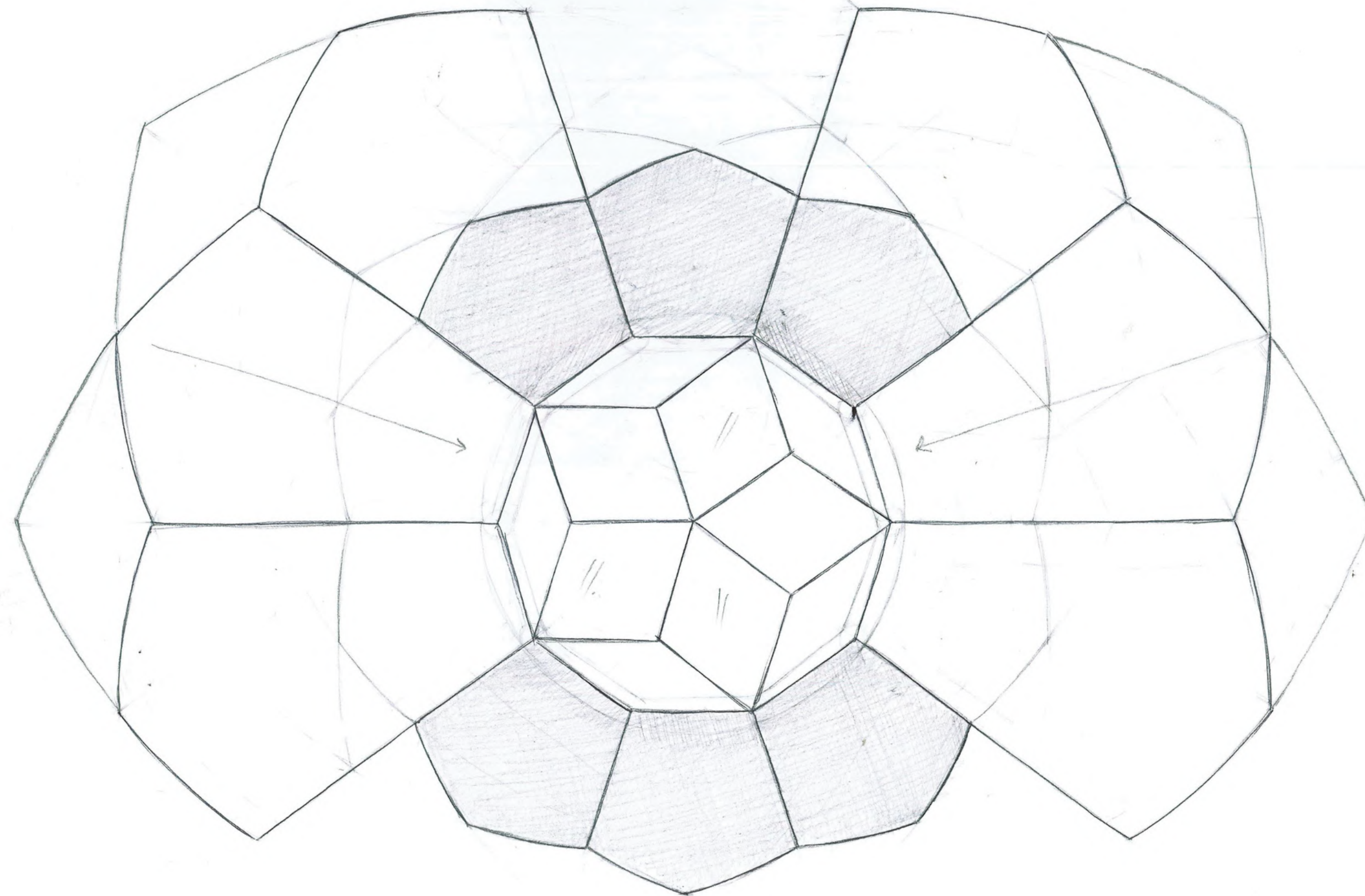
A roof made specifically to catch the light.

A star-shaped skylight accompanies light into the interior of the home, distributing it to all floors while nurturing interior crops.

Bright green, lining the roof, which can photosynthesize light and produce oxygen; the golden form continues its harmonious dance even in the sloping pitches. To the life on the roof, we leave the task of cooperating to make an active and vital Salute to the Sun.

www.progettazioneaurea.it

SCHEMA FALDE
e PANNELLI SOLARI



*There will come a time when we will
be enough to suffice ourselves*

N

**ELECTROMAGNETISM at
the right distance:**

The position of the solar panels is designed so as not to match the bedrooms, which will be equipped with biological switches and star installations, so as to interrupt the circulation of induced electromagnetism during the hours of natural energy recharging (rest).

www.progettazioneaurea.it

TY4

E

South elevation:

**THE SHORT SIDE OF THE
PETALS**

In the south, the house receives light and warmth from the sun in autumn and winter without creating problems in summer; openings are frequent but small, so as to absorb the gifts of the environment and not need shading.



West elevation:

GRACE AND RESPECT

The entrance to the house is located on the west side of the house interacting with the facing building. Salute to the Sun shows a soft character and adaptive spirit, taking an almost traditional-looking form.



West elevation

all the life of a day

East elevation:

108 DEGREES OF RECEPTION
Oriented East/West, Salute to the Sun follows the movement of the sun from sunrise to sunset (hence the name), providing natural light throughout the day.

Large windows have been made to the east, where the morning sun is warm and invigorating;

a major skylight on the roof, which is not afraid of strong sun and lets it filter through to the greenhouse crops; and a west window to welcome the sunset.

Through the greenhouse, light is distributed throughout the house, thanks to the glass windows that cross the two floors vertically, reaching all the rooms.





East elevation



Sun on all sides

North elevation

*The 'petal' walls
receive sunlight
even on the elevation
north (trees permitting)*

www.progettazioneaurea.it



*Micro and macro cosmos,
between fireflies and stars*

Even the Moon is welcome to enter

Top view

www.progettazioneaurea.it

A modern, two-story house with a green roof and large glass windows is nestled among lush greenery and flowering trees. The house has a light-colored facade and a dark roof. The surrounding landscape is filled with tall trees and flowering bushes, creating a serene and natural environment. The sky is clear and blue.

*The gaze feeds on
on the golden beauty that envelops it;
and in this harmonic dance
the soul finds home.*